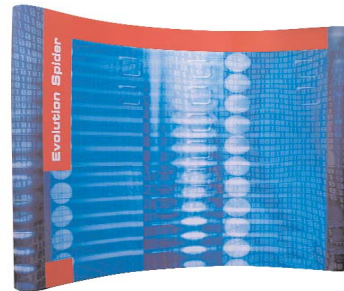


The Spyder is one of the most advanced popup systems on the market. It is extremely fast to assemble and the internal 'web' cross bracing provides the additional strength and rigidity for a nearly unbeatable finished appearance.



features & benefits

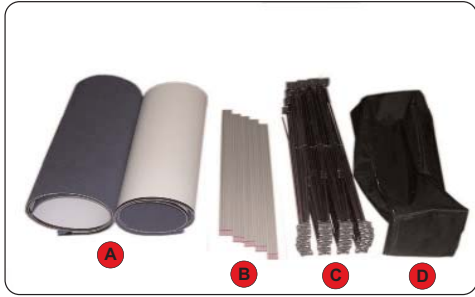
- Fast and easy to assemble
- Narrow footprint
- Full length graphics
- Fully magnetic system
- Comes with a padded nylon storage bag
- Optional molded shipping case



| hardware specifications | Panel specifications | additional info |
|---|--|---|
| Height: 94.3" / 2395mm Depth: 7" / 177.8mm | Fabric / graphic panel: All heights: 93.375" / 2735mm Width: Front curved panel: 29.52" / 750mm Rear curved panel: 33.1" / 840mm End panel: 15.5" / 400mm | Optional moled case available for shipping. Optional lighting available. Lumina 1 Lumina 3 Lumina 4 Lumina 5 Lumina 6 Lumina 7 Lumina 8 Lumina 9 Lumina 10 Lumina 11 Lumina 12 Lumina 13 Lumina 200 |

We are continually improving and modifying our product range and reserve the right to vary the specifications without prior notice. All dimensions and weights quoted are approximate and we accept no responsibility for variance.

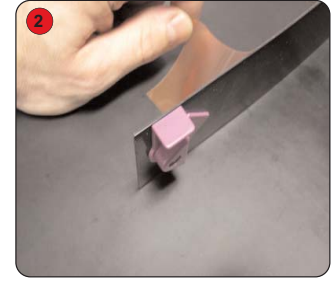
Assembly Instructions



Kit includes: (A) Fabric/graphic panels (B) Channel bars (C) Spyder popup (D) Nylon bag



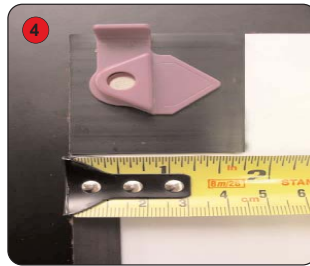
1 Remove hangers, mag bars and frame from padded bag.



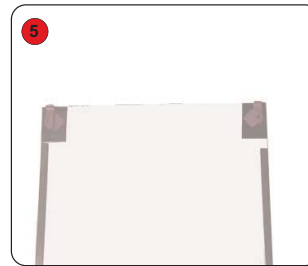
2 Remove protective backer and apply hangers and kickers to the center panels.



3 Position the hanger so that the top corner edges match the top corner edges of the panel. Repeat as needed.



4 Cut down the end panel hangers as shown. Cut 1.75" (44.45mm) from each end.



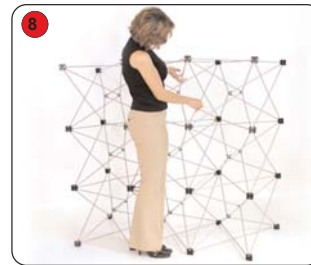
5 Remove protective backer and apply hangers to the end panels. Repeat as needed.



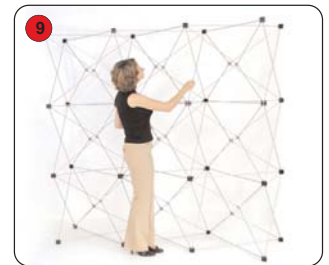
6 Remove Spyder frame from padded bag.



7 Set the frame down on the ground with the purple hub positioned in the top corners.



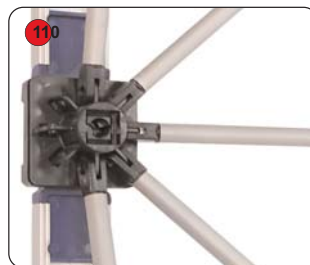
8 Pull upward.



9 The frame will be narrow and tall when fully upright.



10 The magnetic arms will lock the frame when in the fully open position



11 The back of the side hub should look like this when the frame is opened fully



12 The channel bars should run vertically between the hubs.



13 The tops of all the panels should hook into the top hubs. Make sure you secure each of the panels.



14 Start hanging the panels from end.



15 Attach the main panels.



16 Working your way across the frame.



17 Put the other end panel on.



18 Tap the panel seams to fine tune the panel fit as needed.